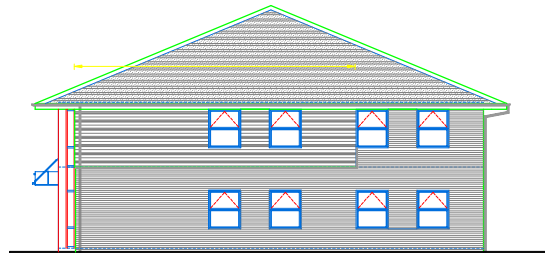
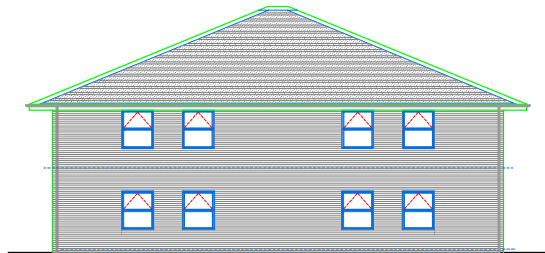


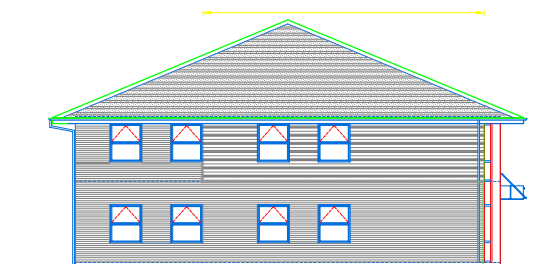
FRONT ELEVATION



SIDE ELEVATION

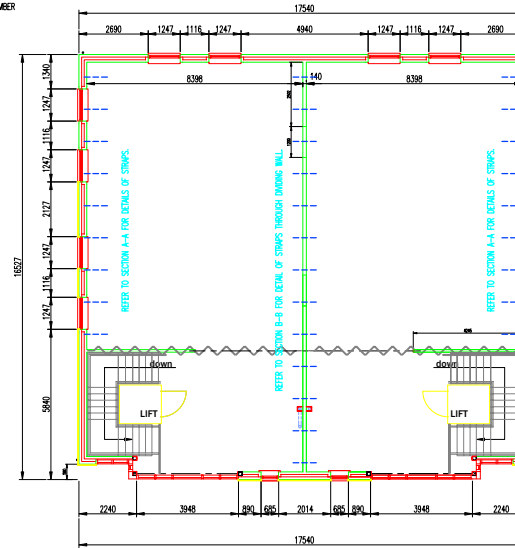


REAR ELEVATION

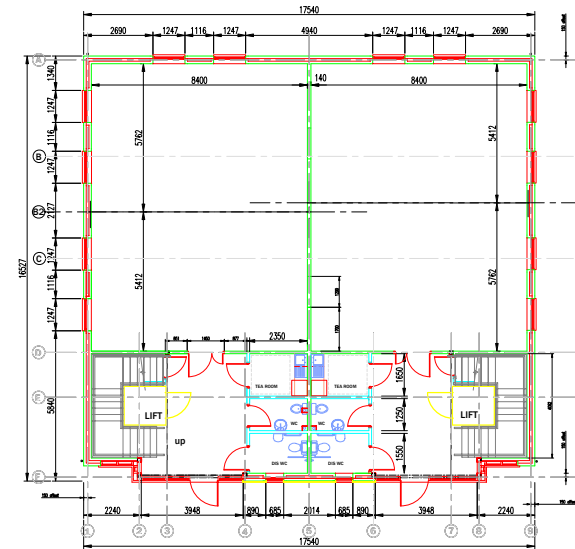


SIDE ELEVATION


NOTES:  
 FOR SUBSTRUCTURE LAYOUT REFER TO DRAWING NUMBER 101  
 FOR FOUNDATION LAYOUT AND DETAILS REFER TO ENGINEERS DRAWINGS  
 FOR FULL HEIGHT SECTIONS THROUGH THE EXTERNAL WALLS REFER TO DRAWING NUMBER 102 & 113  
 FOR GENERAL BUILDING DETAILS INCLUDING LIFT RECESS REFER TO DRAWING NUMBER 107



FIRST FLOOR PLAN



GROUND FLOOR PLAN

Rev	Date	Revision notes	By
DO NOT SCALE			
Status			
<b>CONSTRUCTION</b>			
Project			
<b>13 BUILDINGS DEVELOPMENT AT MILLER COURT BUSINESS PARK SEVERN DRIVE, TEWKESBURY</b>			
Title			
<b>G2K SEMI DETACHED OFFICE UNIT GENERAL ARRANGEMENT (Building N)</b>			
 <b>GLADMAN</b> <small>CHESHIRE HOMES</small>		GLADMAN HOMES 3 West Street Congleton Cheshire CW12 1JN tel: 01260 288800 fax: 01260 288801 www.gladman.co.uk e-mail: mail@gladman.co.uk	
Drawn By	Issue Date	Scale(s)	
MR	Oct 2005	1:100 @ A1	
Project no.	Drawing no.	Revision	
<b>2580/TEW</b>	<b>(2)N700</b>		