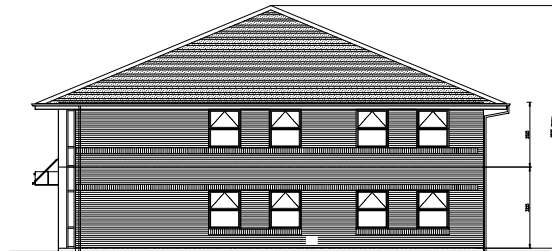
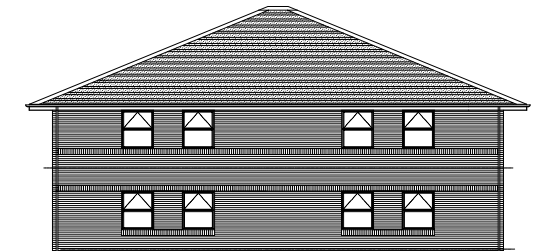


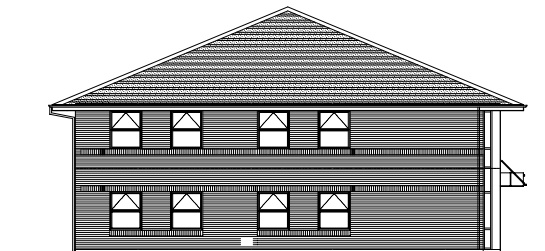
FRONT ELEVATION



SIDE ELEVATION

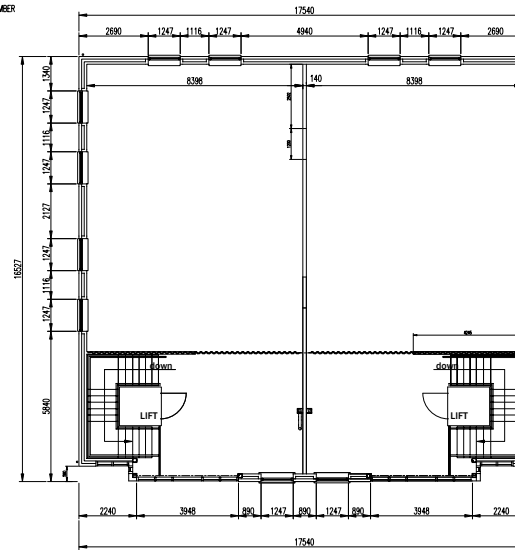


REAR ELEVATION

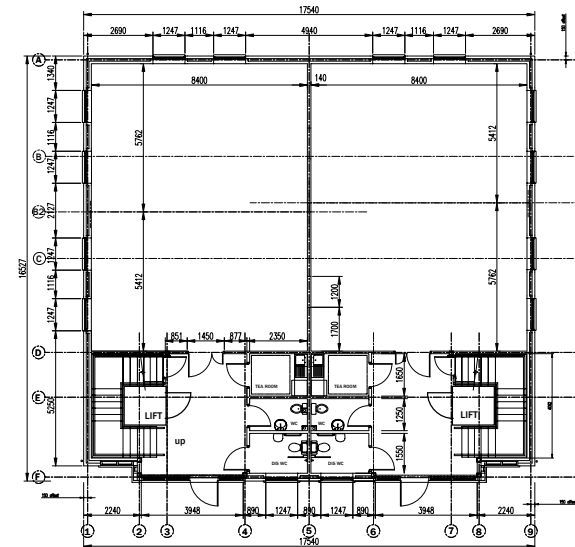


SIDE ELEVATION


NOTES:
 FOR SUBSTRUCTURE LAYOUT REFER TO DRAWING NUMBER 101
 FOR FOUNDATION LAYOUT AND DETAILS REFER TO ENGINEERS DRAWINGS
 FOR FULL HEIGHT SECTIONS THROUGH THE EXTERNAL WALLS REFER TO DRAWING NUMBER 102 & 113
 FOR GENERAL BUILDING DETAILS INCLUDING LIFT ACCESS REFER TO DRAWING NUMBER 107



FIRST FLOOR PLAN



GROUND FLOOR PLAN

Rev	Date	Revision notes	By
DO NOT SCALE			
Status CONSTRUCTION			
Project 13 BUILDING DEVELOPMENT AT MILLER COURT BUSINESS PARK SEVERN DRIVE, TEWKESBURY			
Title G2K SEMI DETACHED OFFICE UNIT GENERAL ARRANGEMENT (Buildings B, C, D, E, F & G)			
 GLADMAN <small>CHESHIRE HOMES</small>		GLADMAN HOMES 3 West Street Congleton Cheshire CW12 1JN Tel: 01260 288800 Fax: 01260 288801 www.gladman.co.uk e-mail: mail@gladman.co.uk	
Drawn By	Issue Date	Scale(s)	
MR	Oct 2005	1:100 @ A1	
Project no.	Drawing no.	Revision	
2580/TEW	(2)700		