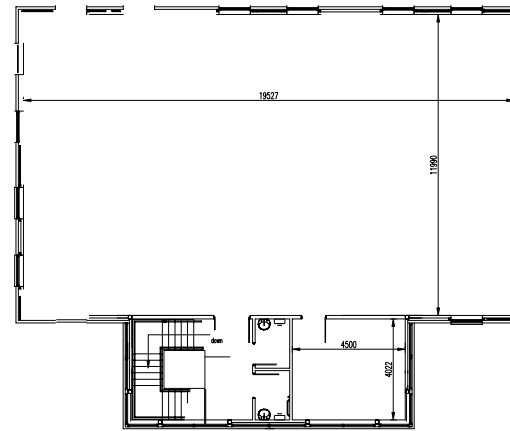


**GROUND FLOOR PLAN**



Rev	Date	Revision notes	By
DO NOT SCALE			
Status			
<b>INFORMATION</b>			
Project			
LEIGHTON COURT SCARBOROUGH BUSINESS PARK (Phase One)			
Title			
G5K FLOOR PLANS			
 <b>GLADMAN</b> <small>Gladman House            Rosewood Way            Congleton Business Park            Congleton            Cheshire            CW12 3JL            Tel: 01268 208800            Fax: 01268 208801            www.gladman.co.uk</small>			
Drawn By	Publish Date	Scale(s)	
.	.	.	
Project no.	Drawing no.	Revision	
.	(5) SK1	.	