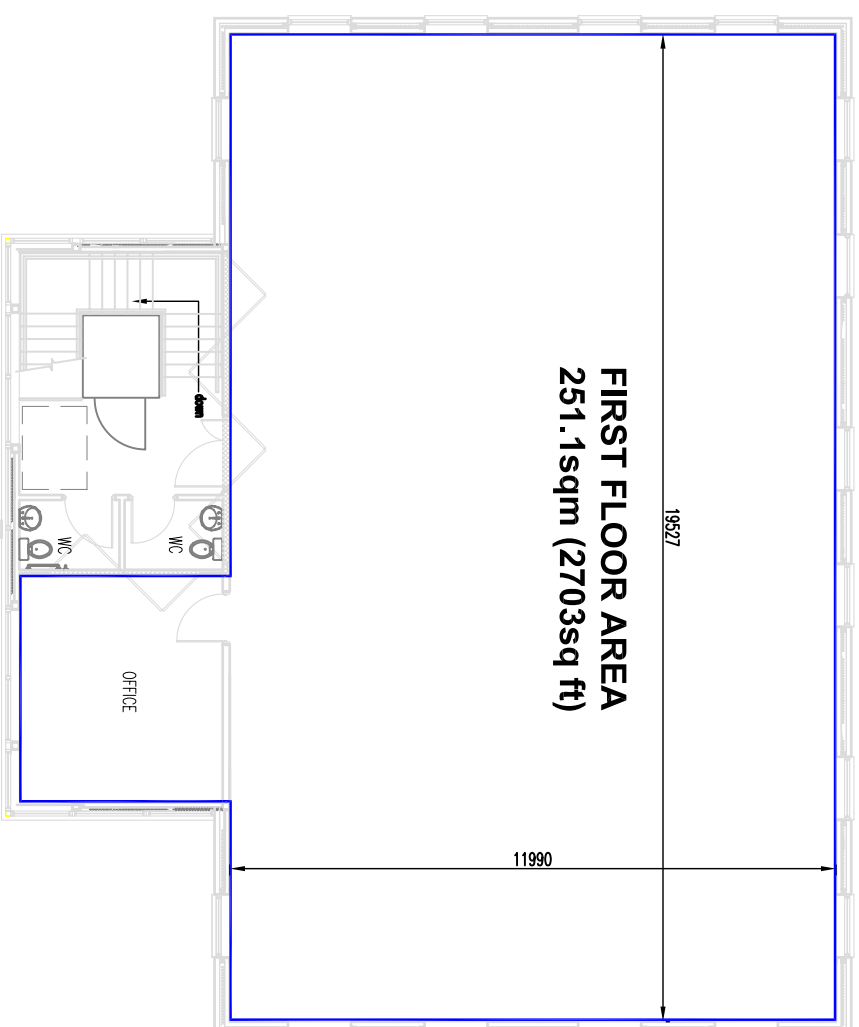


GROUND FLOOR PLAN



FIRST FLOOR PLAN

TOTAL FLOOR AREA
483.4sqm (5203sq ft)



GLADMAN
Gladman House
Alexandria Way
Congleton Business Park
Congleton
Cheshire
CW12 1LB
Tel: 01250 288800
Fax: 01250 288801
www.gladman.co.uk

Rev	Date	By	Revision notes
*	*	*	*

FOR INFORMATION

Project	ELIBURN OFFICE PARK, LIVINGSTON
Title	G5K FLOOR PLATE AND AREA

Drawn by AC	Issue date 01.09.09
Scale(s) 1:150	

Drawing No 3010 345 (5)
