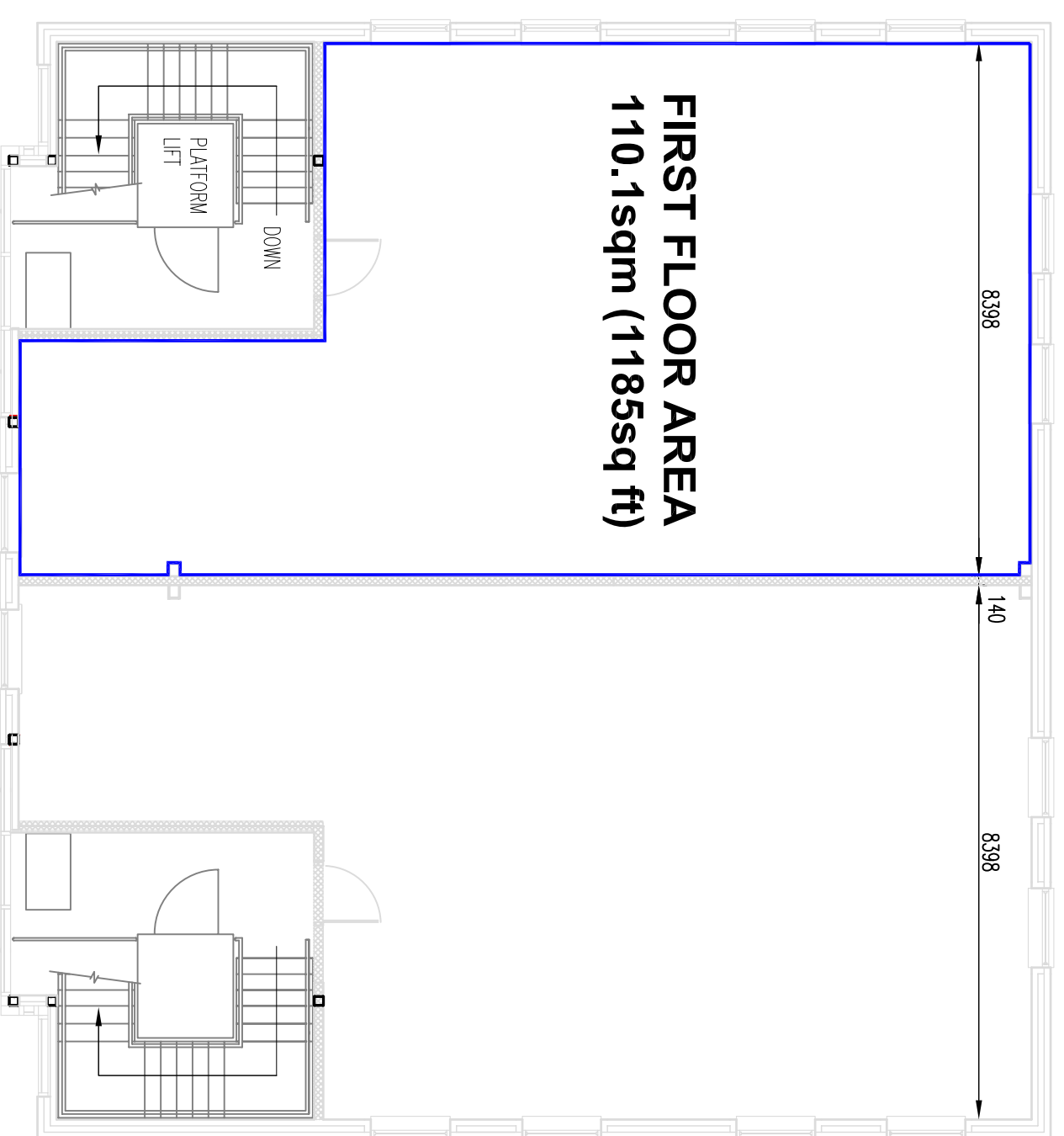


GROUND FLOOR AREA
95.4sqm (1027sq ft)

GROUND FLOOR PLAN



FIRST FLOOR AREA
110.1sqm (1185sq ft)

FIRST FLOOR PLAN

TOTAL FLOOR AREA
205.5sqm (2212sq ft)



Rev	Date	By	Revision notes
*	*	*	*

FOR INFORMATION

Project		ELIBURN OFFICE PARK , LIVINGSTON	
Title		G2K FLOOR PLATE AND AREA	
Drawn by	Issue date	Scale(s)	
AC	30.03.09	1:100	
Drawing No		3010 -345(2)	