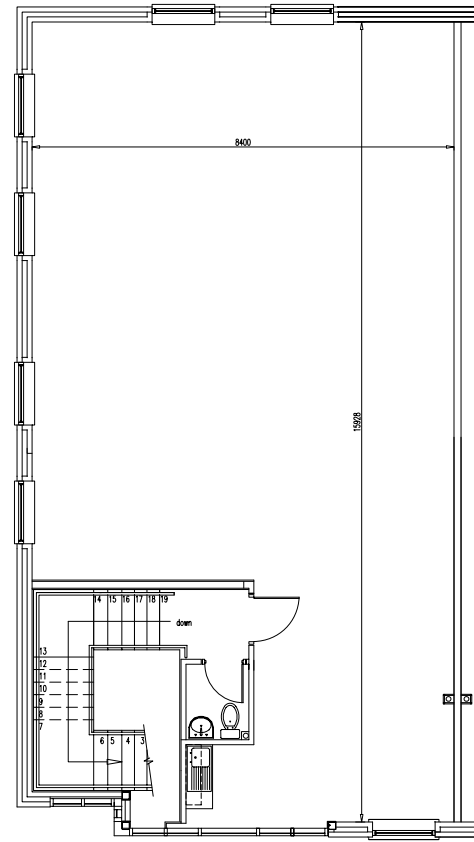


GROUND FLOOR LEVEL



FIRST FLOOR LEVEL

Rev	Date	Revision notes	By
DO NOT SCALE			
PRELIMINARY			
Status			
Project			
Title			
 GLADMAN <small>Gladman House Ansonby Way Congham Business Park Congham Gosport PO12 1JH Tel: 01703 206000 Fax: 01703 206001 www.gladman.co.uk</small>			
Drawn By	Publish Date	Scale(s)	
MR	Nov'07		
Project no.	Drawing no.	Revision	
GEN	(2HS)501		

