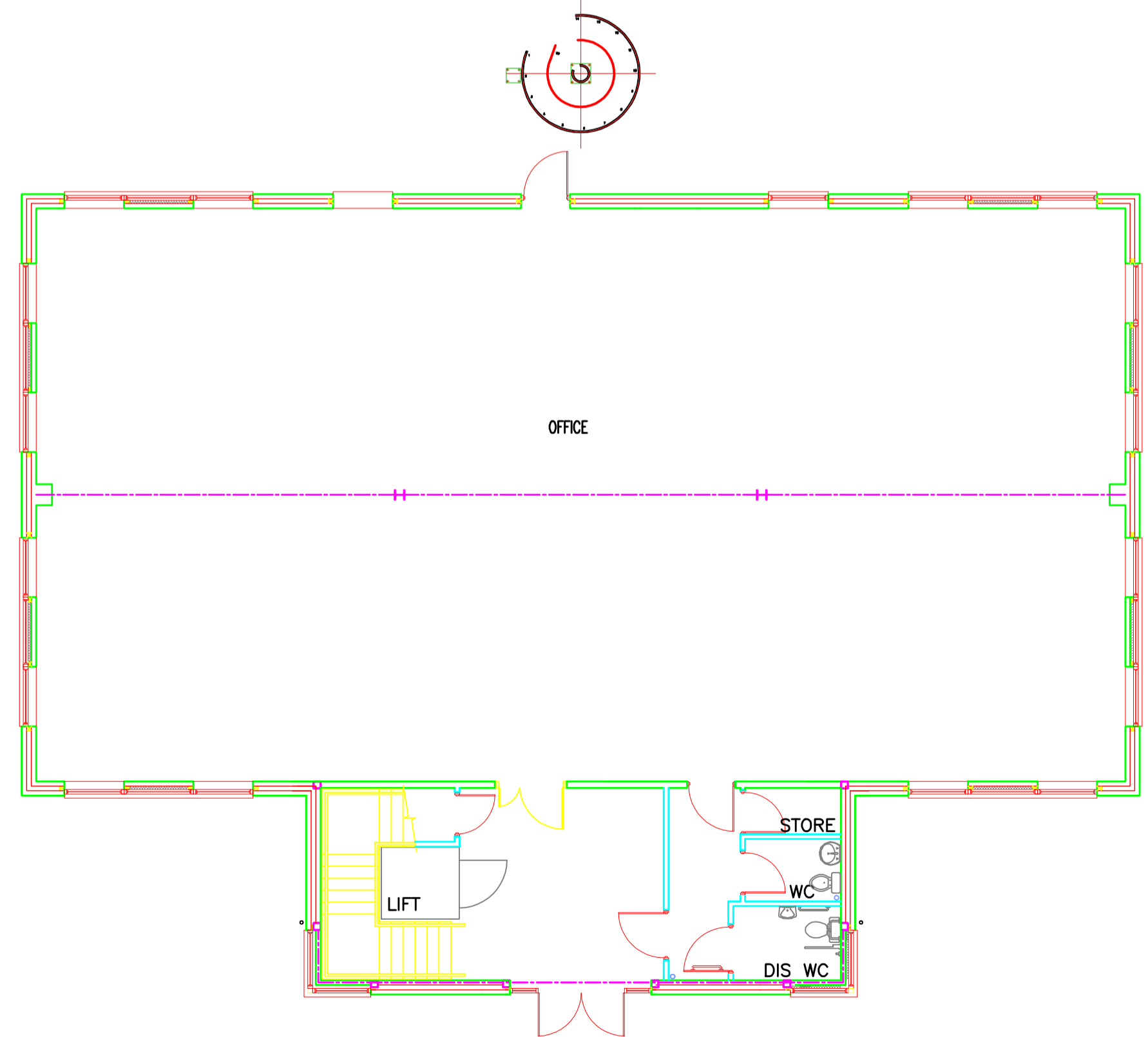



FIRST FLOOR LEVEL



GROUND FLOOR LEVEL

Rev	Date	Revision notes	By
DO NOT SCALE			
Status			
CONSTRUCTION			
Project			
OFFICE/WAREHOUSE DEVELOPMENT RAMPART'S BUSINESS PARK BERWICK UPON TWEED			
Title			
G6K DETACHED OFFICE UNIT GENERAL ARRANGEMENT Unit 22			
		GLADMAN Gladman House Alexandria Way Congleton Business Park Congleton Cheshire CW12 1LB Tel: 01256 28800 Fax: 01256 28801 www.gladman.co.uk	
Drawn By	Published Date	Scale(s)	
MR	Jun'07	1:100 @ A1	
Project no.	Drawing no.	Revision	
3150	(6)500		