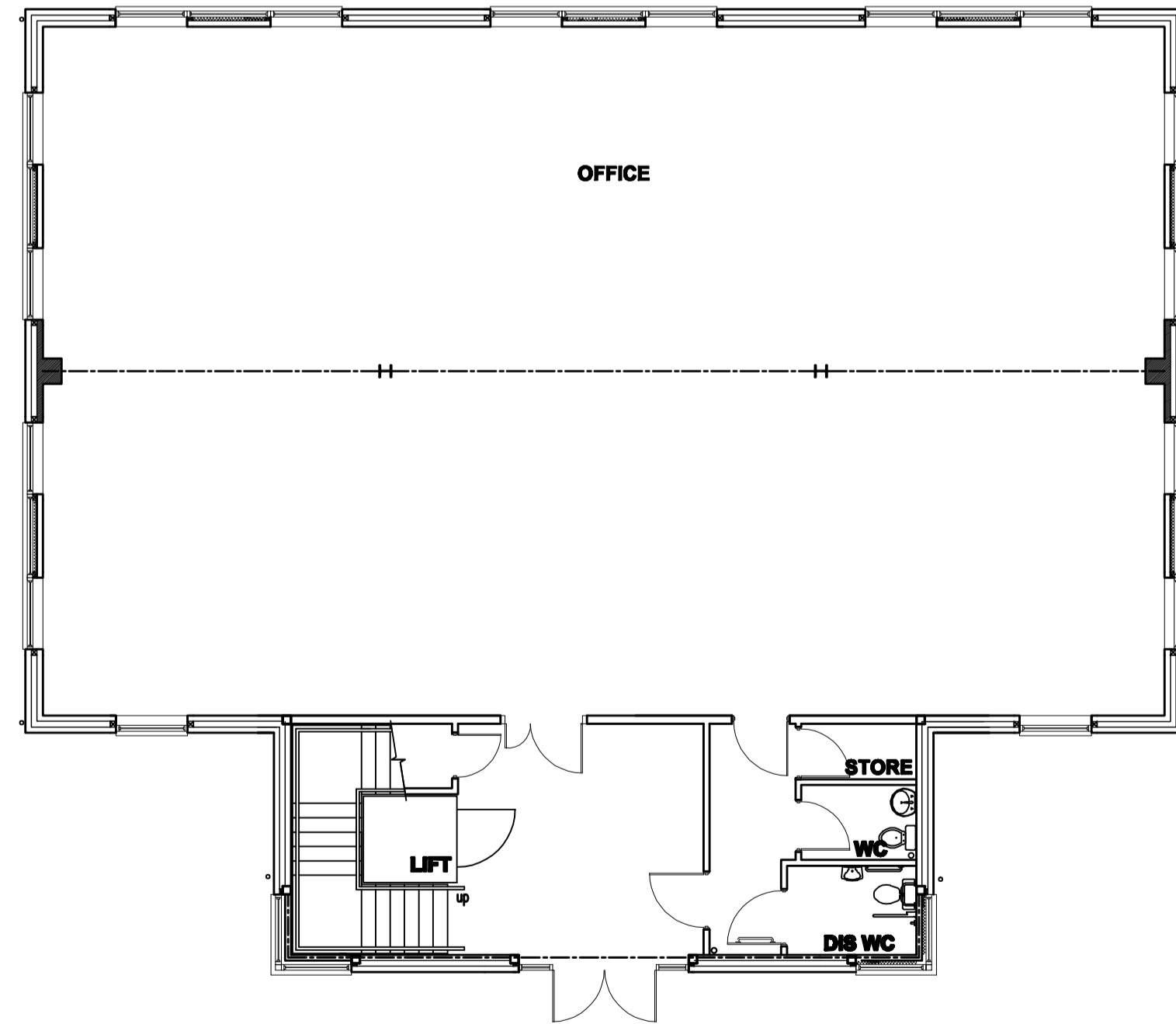


**FIRST FLOOR PLAN**



**GROUND FLOOR PLAN**

Rev	Date	Revision notes	By
<b>DO NOT SCALE</b>			
<b>Status</b>			
<b>CONSTRUCTION</b>			
<b>Project</b>			
OFFICE/WAREHOUSE DEVELOPMENT RAMPART'S BUSINESS PARK BERWICK UPON TWEED			
<b>Title</b>			
G5K DETACHED OFFICE UNIT LAYOUT Units 23 & 25			
		<b>GLADMAN</b> <small>Gladman House Alexandria Way Congleton Business Park Congleton Cheshire CW12 1UB Tel: 01290 288800 Fax: 01290 288801 www.gladman.co.uk</small>	
<b>Drawn By</b>	<b>Published Date</b>	<b>Scale(s)</b>	
MR	Jun'07	1:100 @ A1.	
<b>Project no.</b>	<b>Drawing no.</b>	<b>Revision</b>	
3150	(5)504	.	