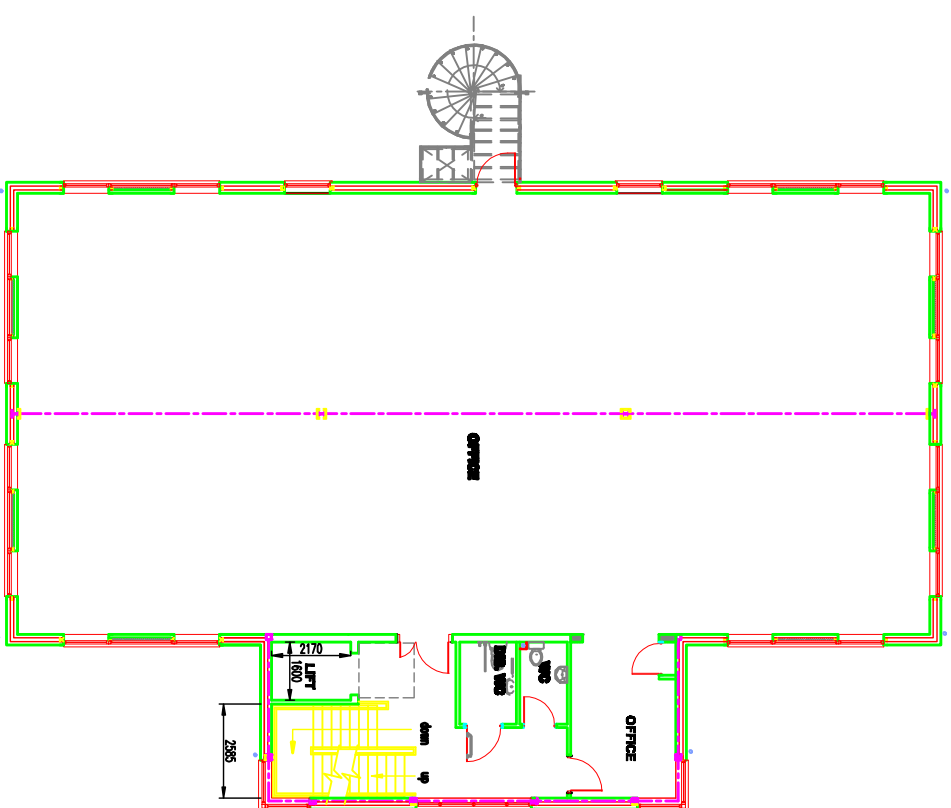
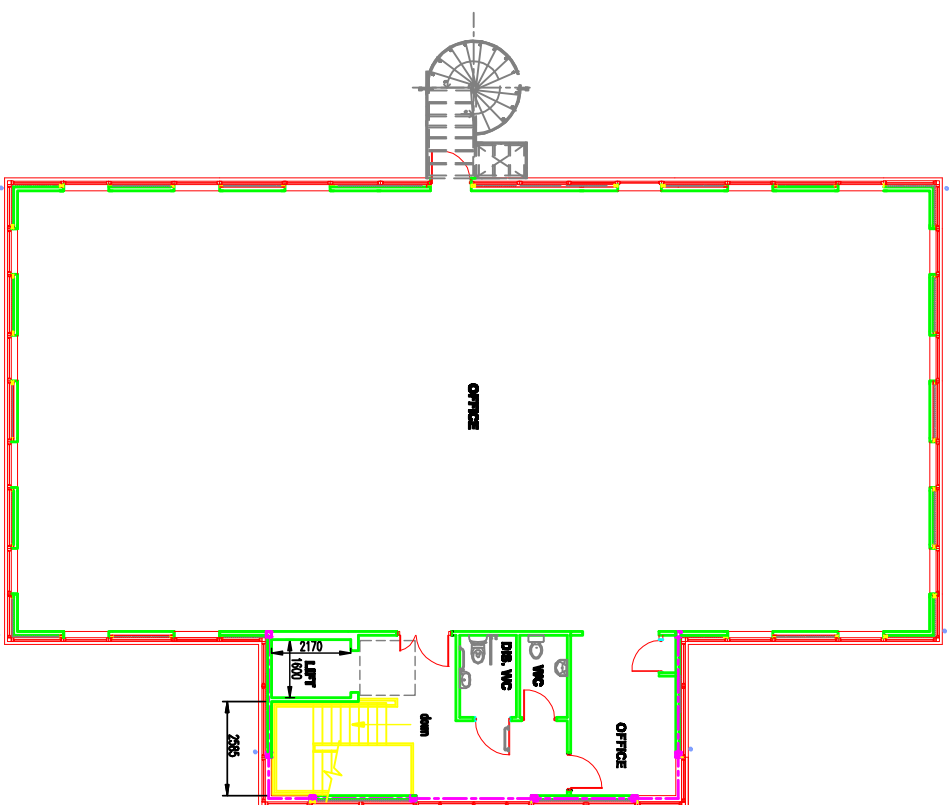


**GROUND FLOOR LEVEL**



**FIRST FLOOR LEVEL**



**SECOND FLOOR LEVEL**

**CONSTRUCTION**

**OFFICE/WAREHOUSE DEVELOPMENT  
 RIVERSIDE BUSINESS PARK  
 BIRMINGHAM (FROM TOWER)**

**G10K DETACHED OFFICE UNIT  
 GENERAL ARRANGEMENT  
 (FLOOR PLANS)**  
 Unit 24

**GLADMAN**  
 Birmingham  
 Aston Road  
 Birmingham B4 7DQ  
 UK  
 Tel: 0121 700 0000  
 Fax: 0121 700 0001  
 www.gladman.co.uk

Project No.	3150	Revision	(10)500
Issue No.	1	Date	14/09/14
Author	AM/07	Checked	SL/09/14
Drawn	AM/07	Approved	