



STAFFORDSHIRE TECHNOLOGY PARK PARKER COURT

ACCOMMODATION

Building	Building Type	Floor Area	
		sq ft	sq m
Unit 1	G25K	25,000	2,322.57
Unit 2	G10k	10,070	935.53
Unit 3	G10k	10,070	935.53
Unit 4	G5k	5,250	487.74
Unit 5	G2k	2,250	209.03
Unit 6	G2k	2,250	209.03
Unit 7	G2k	2,250	209.03
Unit 8	G2k	2,250	209.03
Unit 9	G2k	2,250	209.03
Unit 10	G2k	2,250	209.03
Unit 11	G2k	2,250	209.03
Unit 12	G2k	2,250	209.03
Unit 13	G2k	2,250	209.03
Unit 14	G2k	2,250	209.03
Unit 15	G5K	5,250	487.74
Unit 16	G10K	10,070	935.53

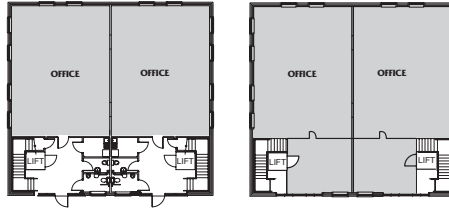
STAFFORDSHIRE TECHNOLOGY PARK

PARKER COURT STAFFORD

G2K



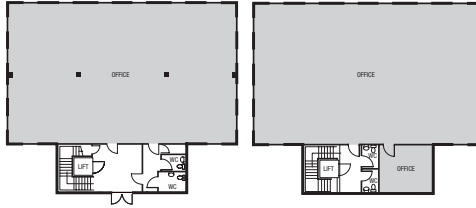
FLOOR	SQ FT	SQ M
First	1,215	112.88
Ground	1,035	96.15
TOTAL	2,250	209.03



G5K



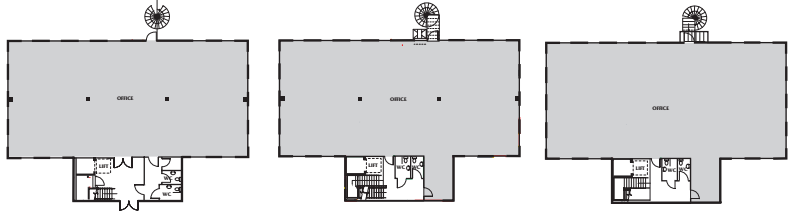
FLOOR	SQ FT	SQ M
First	2,695	250.37
Ground	2,555	237.37
TOTAL	5,250	487.74



G10K



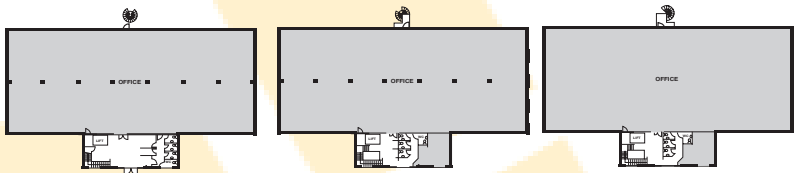
FLOOR	SQ FT	SQ M
Second	3,400	315.97
First	3,400	315.87
Ground	3,270	303.79
TOTAL	10,070	935.53



G25K



FLOOR	SQ FT	SQ M
Second	8,175	759.48
First	8,175	759.48
Ground	8,650	803.61
TOTAL	25,000	2,322.57



MISREPRESENTATION ACT: Gladman, King Sturge & Millar Sandy for themselves and for the vendors or lessors of this property whose agents they are, give notice that (i) these particulars are produced in good faith, are set out as a general guide only and do not constitute any part of an offer or contract. They are believed to be correct but any intending purchasers or tenants should not rely on them as statements or representations of fact but must satisfy themselves as to the correctness of each of them. (ii) no person in the employment of Gladman, King Sturge & Millar Sandy has any authority to make or give any representation or warranty in relation to this property. Photographs of buildings are typical examples and are similar in style and configuration but are only representative of Gladman's proposed development.
Designed & produced by CW Advertising Ltd. Tel 01282 858200. June 2006.

A DEVELOPMENT BY:

GLADMAN
0 1 2 6 0 2 8 8 8 0 0
www.gladman.co.uk

ALL ENQUIRIES:

King Sturge
0121 233 2898
www.kingsturge.com

MILLAR SANDY
Bank Chambers, Salford Street, Stafford, ST16 2JU
01785 244400
www.millarsandy.com